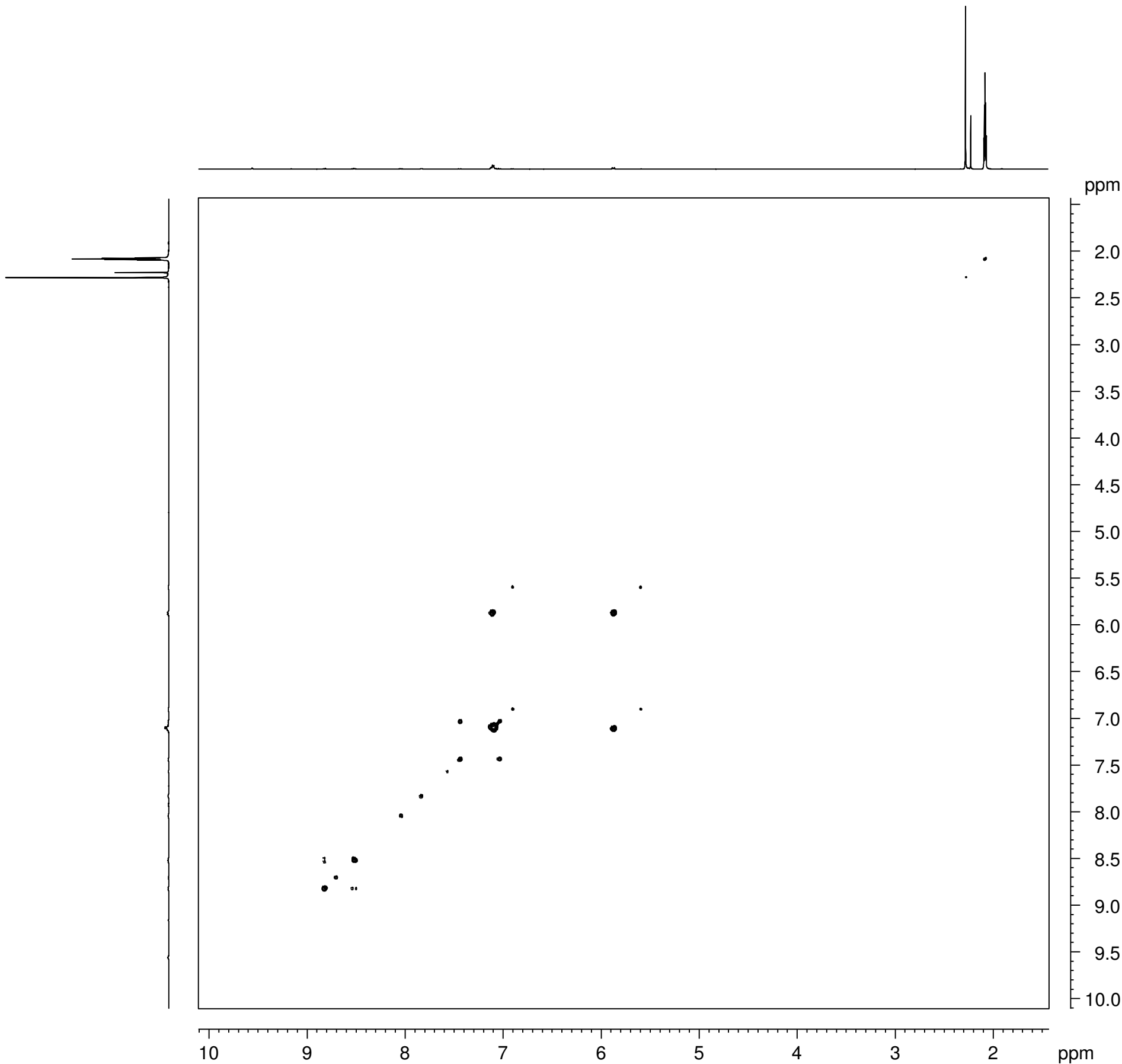


COSY NMR -HS  
ACN2



Current Data Parameters  
NAME MJH-HS-COSY1  
EXPNO 11  
PROCNO 1

F2 - Acquisition Parameters  
Date\_ 20221117  
Time 17.33  
INSTRUM spect  
PROBHD 5 mm PADUL 13C  
PULPROG cosygpmfqf  
TD 1024  
SOLVENT Acetone  
NS 4  
DS 16  
SWH 3472.222 Hz  
FIDRES 3.390842 Hz  
AQ 0.1474560 sec  
RG 2050  
DW 144.000 usec  
DE 6.50 usec  
TE 295.5 K  
D0 0.00000300 sec  
D1 1.43528199 sec  
D13 0.00000400 sec  
D16 0.00020000 sec  
IN0 0.00028800 sec

===== CHANNEL f1 =====  
SFO1 400.1323088 MHz  
NUC1 1H  
P1 12.00 usec  
PLW1 24.29199982 W

===== GRADIENT CHANNEL =====  
GPNAM[1] SMSQ10.100  
GPNAM[2] SMSQ10.100  
GPNAM[3] SMSQ10.100  
GPZ1 16.00 %  
GPZ2 12.00 %  
GPZ3 40.00 %  
P16 1000.00 usec

F1 - Acquisition parameters  
TD 256  
SFO1 400.1323 MHz  
FIDRES 13.563368 Hz  
SW 8.678 ppm  
FnMODE QF

F2 - Processing parameters  
SI 1024  
SF 400.1300000 MHz  
WDW SINE  
SSB 0  
LB 0 Hz  
GB 0  
PC 1.40

F1 - Processing parameters  
SI 512  
MC2 QF  
SF 400.1300000 MHz  
WDW SINE  
SSB 0  
LB 0 Hz  
GB 0